

Asia's Leading Electronics Technology Exhibition

NEPCON JAPAN

Exhibition for following technologies

SMT

Components

PCB

Testing

IC & Sensor Packaging

Fine Process Technology

Power Device & Module

Osaka show

Dates:
May. 14(Wed) – 16(Fri), 2025

Venue:
Intex Osaka, Japan

Tokyo Show -September-

Dates:
Sep. 17(Wed) – 19(Fri), 2025

Venue:
Makuhari Messe, Japan

Nagoya show

Dates:
Oct. 29(Wed) – 31(Fri), 2025

Venue:
Portmesse Nagoya, Japan

Tokyo Show -January-

Dates:
Jan. 21(Wed) – 23(Fri), 2026

Venue:
Tokyo Big Sight, Japan

Organised by: RX Japan Ltd.

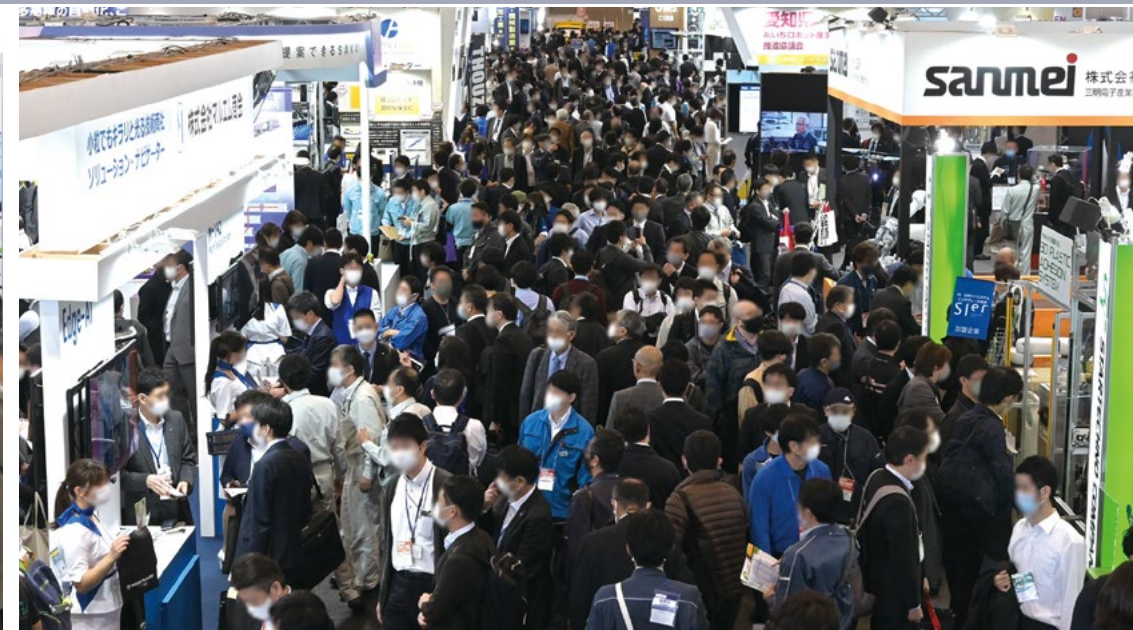
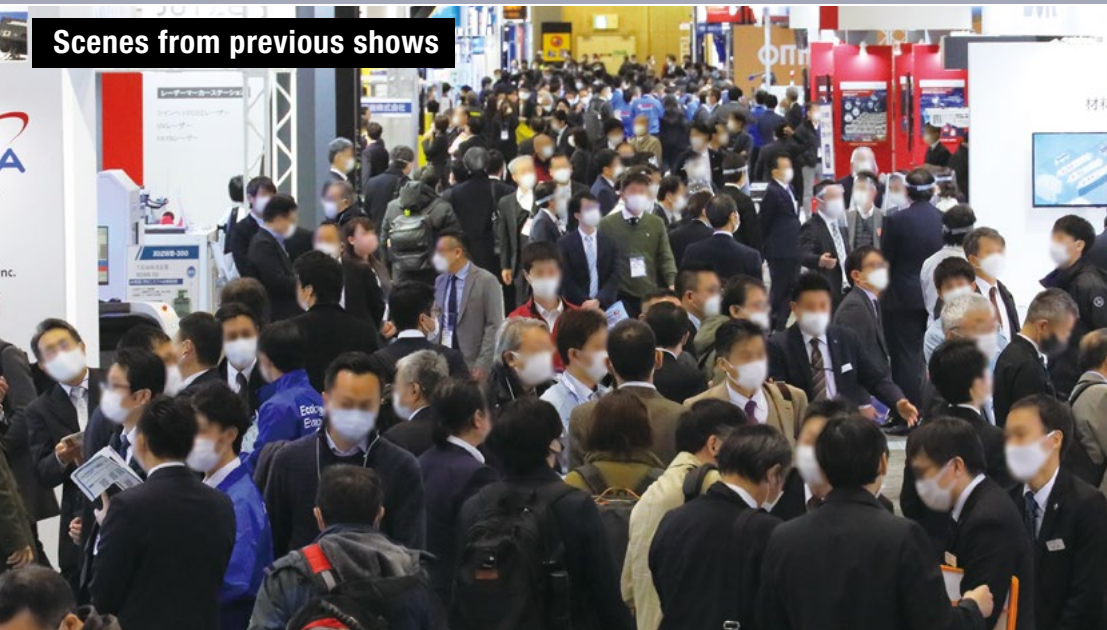
INDEX

▶ Click below and jump to the page

▶ <u>Scenes from Previous Shows</u>	P3
▶ <u>Show Outline</u>	P4
▶ <u>Exhibit Profile</u>	P5
▶ <u>About Exhibitors</u>	P6
▶ <u>About Visitors</u>	P7
▶ <u>Concurrent Conference</u>	P8
▶ <u>Details for Tokyo Shows – September & January –</u>	P9
▶ <u>Details for Osaka Show</u>	P10
▶ <u>Details for Nagoya Show</u>	P11
▶ <u>Schedule until the Show</u>	P12
▶ <u>How to Join as an Exhibitor</u>	P13

Asia's Leading Electronics Technology Exhibition

Scenes from previous shows



B2B Exhibition for R&D and Manufacturing Technologies

Exhibitors

Manufacturers and trading companies of the following fields:

- SMT
- Testing Technologies
- Technologies for IC & Sensor Packaging
- Electronic Components/ Materials
- Printed Circuit Boards
- Fine Process Technologies
- Power Device & Module Technologies

etc.

Business Meetings

- ◆ New Product/ Technology Introduction
- ◆ Technical Consultation
- ◆ New Partnership Arrangement
- ◆ Price/Delivery Date Arrangement



Visitors

Engineers of the following manufacturers:

- Electronic Devices
- Semiconductors/ Electronic Components
- Automobiles, Automotive Components
- Medical Equipment
- Robots, FA Equipment

- New Entrants to Electronic Industry

etc.

The Show Consists of 7 Specialised Fairs

<Exhibit Profile>

SMT

- Mounters
- Taping
- Printing Machines/Masks
- Clean/ESD Protection
- Soldering Machines
- etc.



Testing Technology

- Vision Inspection
- Measurements, Inspections, Analysis
- Non Destructive Inspection Equipment
- Testers
- etc.



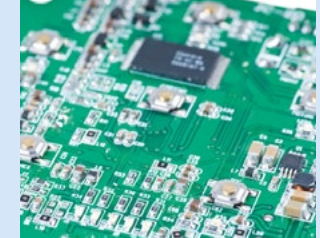
Packaging Technology

- Materials
- Components
- Semiconductor Device Inspection Equipment
- Assembly/Testing Equipment
- Plating/Etching Materials
- etc.



PCBs

- Rigid PCBs
- Multi-layered PCBs
- Semiconductor Packaging PCBs
- Flexible PCBs
- Optical PCBs
- etc.



Electronic Components & Materials

- Terminal Blocks
- Sensors
- Materials for Mounted Circuit
- Connectors & Cables
- Switches, Registers
- etc.



Fine Process Technology

- Press Work
- Drilling
- Metal Molding Electroforming
- Fine Casting
- Laser Processing
- etc.



Power Device and Module New

- Power Devices
- Power Modules
- Semiconductor Materials & Components
- Analysis Technologies
- Manufacturing & Testing Technologies
- EMC
- Heat Prevention (Heat release & Cooling)
- Control/Drive/Sensing
- etc.



Leading Companies Exhibit Every Year

<List of exhibitors in previous shows (excerpted)>

- AGC
- AJINOMOTO FINE-TECHNO
- ALMIT
- ALPS ALPINE
- AMADA MIYACHI
- ANALOG DEVICES
- ASE GROUP
- AT&S JAPAN
- BOSCH
- BROTHER INDUSTRIES
- CANON MACHINERY
- CARL ZEISS
- CKD
- CMK
- DAIICHI JITSUGYO
- DELTA ELECTRONICS (JAPAN)
- DENKA
- DUPONT
- EVERLIGHT ELECTRONICS
- FUJI
- FUJIPRINT

- FUJITSU ADVANCED TECHNOLOGIES
- FUJITSU INTERCONNECT TECHNOLOGIES
- HAKKO
- HAMAMATSU PHOTONICS
- HESSE MECHATRONICS JAPAN
- HITACHI HIGH-TECHNOLOGIES
- INFINEON TECHNOLOGIES JAPAN
- JAPAN AUTOMATIC MACHINE
- JAPAN UNIX
- JUTZE JAPAN
- KCE ELECTRONICS
- KEYENCE
- KODENSHI
- KOH YOUNG JAPAN
- KOKI
- KOMAX JAPAN
- KULICKE AND SOFFA (JAPAN)
- LAPIS SEMICONDUCTOR
- LPKF LASER & ELECTRONICS

- MEIKO ELECTRONICS
- MICRO-TEC
- MIRTEC JAPAN
- MITSUBISHI MATERIALS
- MURATA MANUFACTURING
- MYCRONIC TECHNOLOGIES
- NAGASE
- NAGOYA ELECTRIC WORKS
- NEWLONG SEIMITSU KOGYO
- NGK SPARK PLUG
- NIDEC
- NIPPON AVIONICS
- NIPPON CHEMI-CON
- NIPPON MEKTRON
- NORDSON ADVANCED TECHNOLOGY
- OKI ELECTRIC INDUSTRY
- OKI PRINTED CIRCUITS
- OLYMPUS
- OMRON
- ON SEMICONDUCTOR
- PANASONIC

- PARMi JAPAN
- REXXAM
- ROHM
- ROHM AND HAAS ELECTRONIC MATERIALS
- SAKI CORPORATION
- SCHLEUNIGER JAPAN
- SCREEN SEMICONDUCTOR SOLUTIONS
- SEKISUIPLASTICS
- SHIBUYA
- SHIMADZU
- SHIN-ETSU CHEMICAL
- SHINMAYWA INDUSTRIES
- SHOWA DENKO
- SONY SEMICONDUCTOR SOLUTIONS
- STANLEY ELECTRIC
- STMICROELECTRONICS
- TAIYO INK MFG.
- TAIYO YUDEN
- TAMURA

- TDK
- TEIJIN
- TEST RESEARCH (TRI)
- TOKYO ELECTRON DEVICE
- TOKYO WELD
- TORAY
- TOSHIBA ELECTRONIC DEVICES & STORAGE
- TRUMPF
- UBE INFORMATION SYSTEMS
- UENO SEIKI
- ULTRASONIC ENGINEERING
- USHIO
- WESTERN DIGITAL JAPAN
- XILINX
- YAC GARTER
- YAMAHA MOTOR
- YAMATO SCIENTIFIC

etc.

See here for full list of exhibitors in 2024 Tokyo Show -January-



High Quality Visitors Attend

<List of visitors in previous shows (excerpted)>

- AISIN
- ALPS ALPINE
- AMAZON
- AMD
- AMKOR TECHNOLOGY
- APPLE
- ASE
- ASUSTEK COMPUTER
- AUDI
- BMW
- BOE
- BOSCH
- BYD
- CANON
- CLARION
- COMPAL ELECTRONICS
- CONTINENTAL AUTOMOTIVE
- DAIMLER
- DELTA ELECTRONICS
- DENSO
- DENSO TEN
- EPISTER
- EVERLIGHT
- FAIRCHILD SEMICONDUCTOR
- FANUC
- FORD MOTOR
- FOXCONN
- FUJI FILM
- FUJITSU
- GE
- GENERAL MOTORS
- GOOGLE
- HAIER
- HISENSE
- HITACHI
- HITACHI AUTOMOTIVE SYSTEMS
- HONDA R&D
- HUAWEI TECHNOLOGIES
- HYUNDAI
- INFINEON TECHNOLOGIES JAPAN
- INTEL
- JDI
- KAWASAKI HEAVY INDUSTRIES
- KEIHIN
- KOITO MFG.
- KONICA MINOLTA
- KONKA
- KYOCERA
- LENOVO
- LG DISPLAY
- LG ELECTRONICS
- MAZDA MOTOR
- MEDIATEK
- MEGACHIPS
- MIDEA GROUP
- MITSUBISHI ELECTRIC
- MURATA MFG.
- NEC
- NICHIA
- NIHON KOHDEN
- NISSAN MOTOR
- NVIDIA
- OLYMPUS
- OMRON
- PANASONIC
- PEGATRON
- PIONEER
- PLEXUS
- QUALCOMM
- QUANTA COMPUTER
- RENAULT
- RENESAS ELECTRONICS
- ROHM
- SAMSUNG DISPLAY
- SAMSUNG ELECTRONICS
- SEIKO EPSON
- SHARP
- SHENZHEN CHINA STAR OPTOELECTRONICS TECHNOLOGY
- SIEMENS
- SK HYNIX
- SMIC
- SONY
- SPIL
- STANLEY ELECTRIC
- STMICROELECTRONICS
- SUZUKI MOTOR
- SYSMEX
- TAIYO YUDEN
- TCL
- TDK
- TERUMO
- TOKAI RIKA
- TOSHIBA
- TOYOTA MOTOR
- TSMC
- VOLKSWAGEN
- VOLVO
- YAMAHA MOTOR
- YASKAWA

etc.

<Visitor profile>

Industry



Semiconductor



Electronic Device



Automobile



Wearable Device



Medical



Robot



Machinery



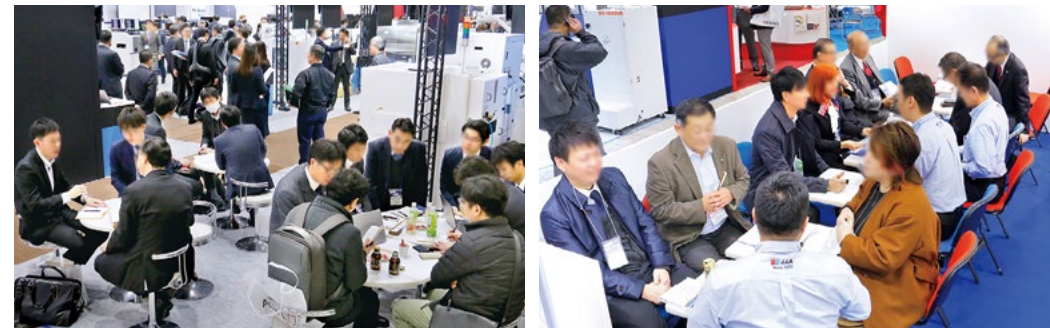
Aircraft/Aerospace

etc.

Job Division

- Manufacturing
- Information System
- Management
- R&D
- Maintenance
- Production
- Production Management
- Planning
- Purchase/Procurement
- Construction
- Quality Control
- Plant/Facility Management
- Development
- Testing/Analysis

etc.



Industry Leaders Speak at Conference

Conference by industry leaders attract huge attention & visitors

<List of speakers in previous shows (excerpts)>



Norio Nakajima
President,
Murata Manufacturing Co., Ltd.



Atsuo Takemoto
Executive Officer, Manufacturing
and Procurement Headquarters
Konica Minolta, Inc.



Udo Welzel
Senior Expert, Automotive
Electronics – Engineering
Technology Integration,
Robert Bosch GmbH



Takeshi Inoue
Energy & Industry Group,
Power Device Application Dept.,
Application Engineer Div.,
ROHM Co., Ltd.



Takehiro Nakamura
Senior Vice President,
General Manager of 6G Labs.,
NTT DOCOMO, Inc.



Atsuto Shimada
Group General Manager,
Manufacturing Process Solution
Dept., Process Automation Business
Div., Connected Solutions Company,
Panasonic Corp.



Daniel Isaacs
Director, Automotive,
Xilinx, Inc.



Rajneesh Kumar
Principal Engineer & Manager, SIP
& Module Packaging Tech.,
Qualcomm Inc.



Arihiro Kamiya
Semiconductor Strategy Planning
Dept., Electronics Platform Hardware
R&D Div.,
DENSO Corp.



Doohwan Lee
Director and Principal Eng.,
Test & System Package (TSP),
Samsung Electronics Co., Ltd.



Terushi Shimizu
Senior Executive Vice President,
Sony Corp. /
Representative Director,
President and CEO,
Sony Semiconductor Solutions Corp.



Thorsten Meyer
Lead Principal, Package Concept
Engineering,
Infineon Technologies AG

Hot topics covered in the previous Conferences

- Innovation to Realise 5G
- Future Shaped by IoT/Sensors
- Electronics Manufacturers' Smart Factory Strategies
- Moving towards 6G
- AI in Material Development

etc.



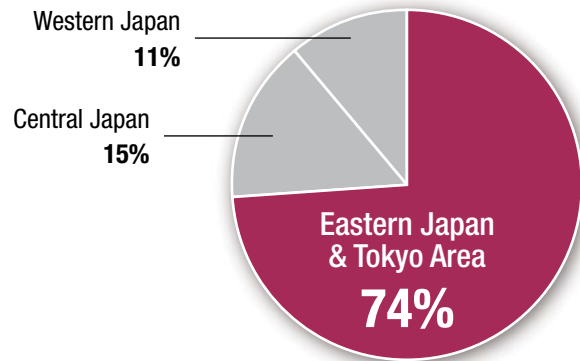
Honorifics omitted. In random order. Speakers' affiliations and positions are those at the time of the conference. Affiliations and positions may be omitted due to the space limit.

Tokyo Edition Held Twice a Year

◆ Meet Visitors from Tokyo & Eastern Japan!

Visitor Breakdown by Region

(Figures from Japanese Visitors in 2023 Tokyo Show)



<Companies located in Tokyo & Eastern Japan>

- NEC
 - NISSAN MOTOR
 - HONDA MOTOR
 - HONDA R&D
 - SUBARU
 - HINO
 - MITSUBISHI FUSO TRUCK & BUS
 - TOYOTA MOTOR (Tokyo Office)
 - MAZDA (Tokyo Office)
 - ISUZU (Tokyo Office)
 - SUZUKI (Tokyo Office)
 - DAIHATSU (Tokyo Office)
 - NIDEC (Tokyo Office)
 - HITACHI ASTEMO
 - ALPSALPINE
 - KOITO MANUFACTURING
 - NSK
 - SONY
 - STANLEY ELECTRIC
 - AISIN (Tokyo Office)
 - DENSO (Tokyo Office)
 - NIDEC (Tokyo Office)
 - PANASONIC (Tokyo Office)
- etc.

September Tokyo Show – More than 90% of visitors only visit Sep. show! (Not to Jan. show)

300 Exhibitors & 33,000 Visitors

Dates: September 17 (Wed) – 19 (Fri), 2025

Venue: Makuhari Messe, Japan

Concurrent Shows

4th RoboDEX (September)

4th Smart Factory Expo (September)

1st Manufacturing Industry's HR Expo (September)

3rd Green Factory Expo (September)

4th AUTOMOTIVE WORLD (September)



January Tokyo Show

1,850 Exhibitors & 92,000 Visitors

Dates: January 21 (Wed) – 23 (Fri), 2026

Venue: Tokyo Big Sight, Japan

– World's Leading in Size

Concurrent Shows

18th AUTOMOTIVE WORLD

Factory Innovation Week 2026

5th SMART LOGISTICS Expo



Numbers of exhibitors and visitors are forecasts including concurrent shows.

1st Event! Join **Osaka** May Edition!

◆ Meet Visitors from Western Japan

Held in Osaka, 2nd largest manufacturing area in Japan!
Osaka is known for its strong electronics industry.

<Companies located in Western Japan>

- Panasonic (Osaka)
- Sharp (Osaka)
- Kyocera (Kyoto)
- Murata Manufacturing (Kyoto)
- Sumitomo Electric (Osaka)
- Omron (Kyoto)
- Mitsubishi Electric (Hyogo)
- Daikin Industries (Osaka)
- ROHM (Kyoto)
- Nidec (Kyoto)
- Dainippon Screen (Kyoto)
- Sanyo Electric (Osaka)
- Fujitsu Ten (Hyogo)
- Shimadzu Corporation (Kyoto)
- Toshiba (Osaka)
- Nichicon (Kyoto)
- Sumitomo Wiring Systems (Osaka)
- Rinnai Corporation (Osaka)
- Kobelco (Kobe Steel) (Hyogo)



Dates: May 14 (Wed) – 16 (Fri), 2024
Venue: Intex Osaka, Japan

◆ 600 Exhibitors & 45,000 Visitors

Co-holding with

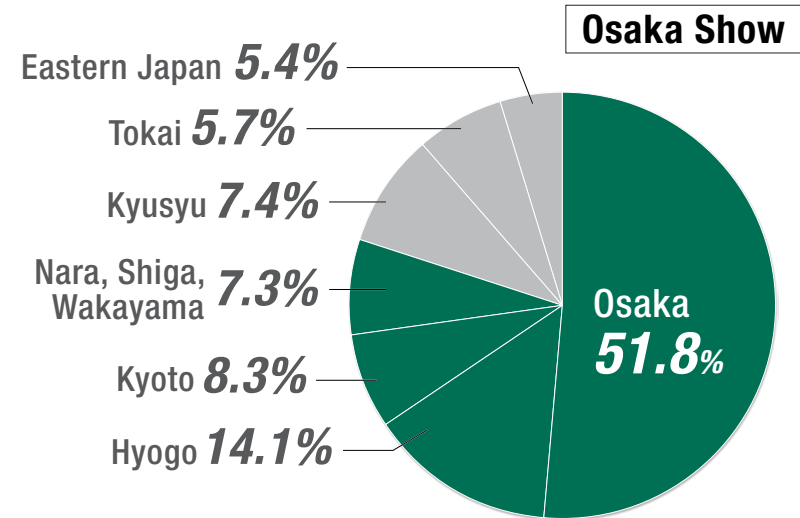


<Visitors>

Manufacturing of Electronics & Semiconductor

◆ Major visitors shall be from Western Japan

Visitors mainly come from Western Japan



*The Chart data is from Manufacturing World Osaka show 2022
Visitor breakdown by region at another show (Manufacturing World Osaka 2022) which has also Tokyo, Nagoya and Osaka shows.

Join Nagoya October Edition!

◆ Meet Visitors from Central Japan

Aichi Prefecture has been ranked as far No.1 in Manufacturing!

<Companies located in Central Japan>

- | | | |
|------------------------------|-------------------------------|---------------------------|
| • TOYOTA (Aichi) | • Yazaki (Shizuoka) | (Aichi) |
| • DENSO (Aichi) | • Aichi Machine Industry | • Nippon Kayaku (Niigata) |
| • Aisin (Aichi) | (Aichi) | • Kojima Press Industry |
| • Brother Industries (Aichi) | • Fujimi (Aichi) | (Aichi) |
| • DMG Mori (Aichi) | • Mitsubishi Electric (Aichi) | • Yamada Manufacturing |
| • NGK Insulators (Aichi) | • Hitachi Automotive | (Nagano) |
| • Sumitomo Electric | Systems (Shizuoka) | • Oiles (Aichi) |
| Industries (Aichi) | • Nippon Sharyo (Aichi) | |
| • Tokai Rika (Aichi) | • Mitsubishi Heavy Industries | |

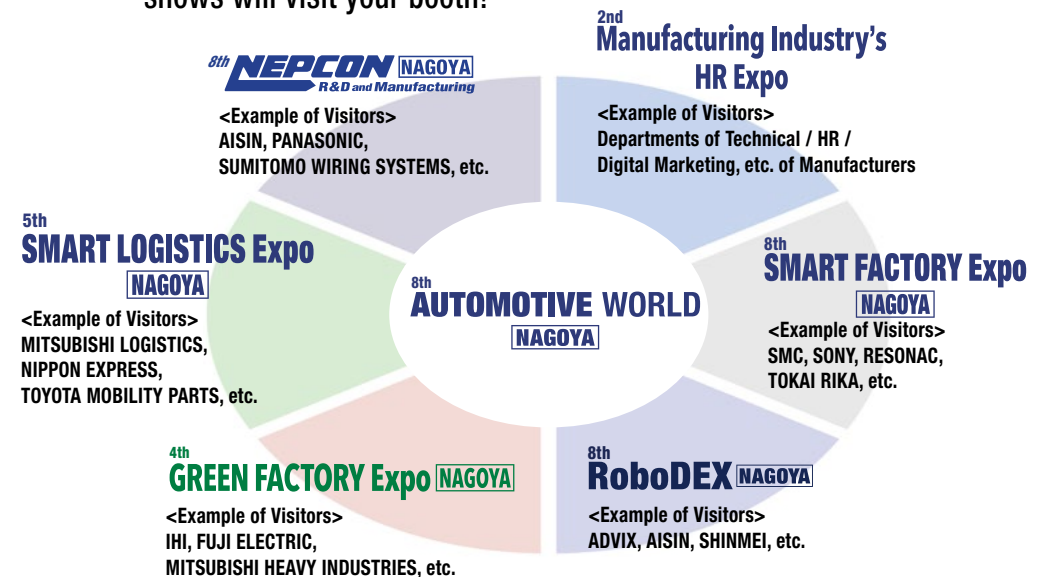


Nagoya
(Aichi Prefecture)

Dates: October 29 (Wed) – 31 (Fri), 2025
Venue: Portmesse Nagoya, Japan

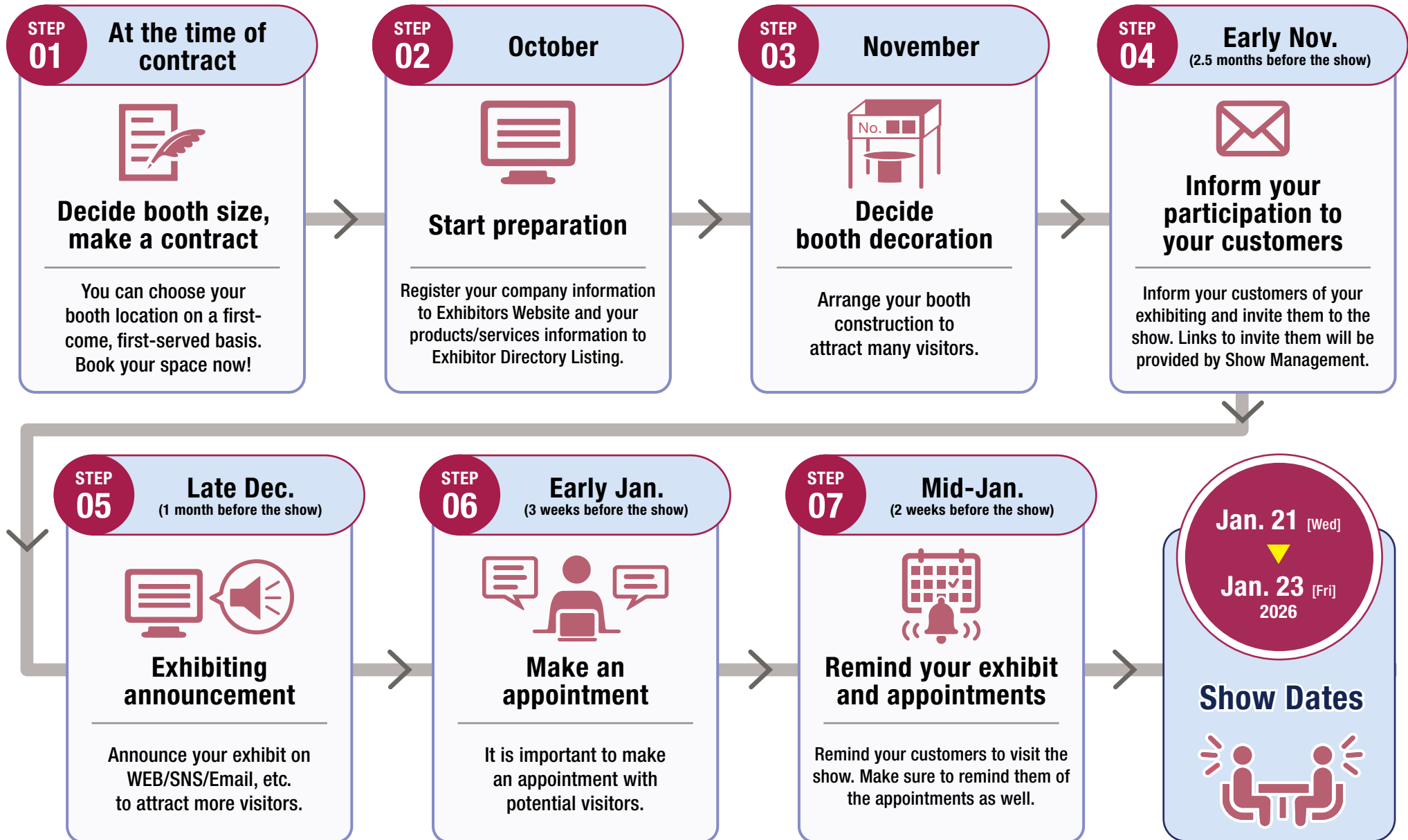
◆ 710 Exhibitors & 38,000 Visitors

Experience the SYNERGY! The visitors from other 5 co-held shows will visit your booth!



(Numbers of exhibitors and visitors are forecasts including concurrent shows)

Schedule until the Show <Sample of Jan. Show Showcase>



How to Join as an Exhibitor

- 1** Please **contact Show Management** with your product information and your preferable exhibit space size.
- 2** Show Management will **offer available spaces** in the most suitable exhibit area for your products.
- 3** Please **choose your preferable location** and submit the space contract form.

Please see below for the cost information and the floor plan.



Participation Cost



Floor Plan



Contract



**If you have any questions,
please feel free to contact us.**

► Contact **Organiser: RX Japan Ltd.** **NEPCON JAPAN Show Management**

11F Tokyo Midtown Yaesu, 2-2-1 Yaesu, Chuo-ku, Tokyo 104-0028, Japan TEL: +81-3-6739-4102 FAX: +81-3-4563-2100
E-mail: inw.jp@rxglobal.com Web: www.nepconjapan.jp/en/ A division of Reed Business Registered in England, Number 678540